

VÁLVULAS HIDRÁULICAS

Hydraulic valves
Valves hydrauliques
Valvole idrauliche

Estrangulador bidireccional (regulable)



Barrel flow control valve - bidirectionnel
Étrangleur réglable bidirectionnel
Strozatore bidirezionale (regolabile)

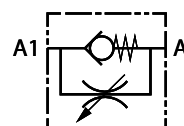


Referencia Part n°	ROSCA THREAD	CAUDAL MÁX. (l/min) MAX. FLOW (l/min)	PRESIÓN MÁX. (bar) MAX. PRESSURE (bar)	\$
VT010004	1/4" BSP	12	350	39,86
VT010006	3/8" BSP	30	350	52,00
VT010008	1/2" BSP	45	310	52,96

Estrangulador unidireccional (regulable)



Barrel flow control valve - unidirectional
Étrangleur réglable unidirectionnel
Strozatore unidirezionale (regolabile)

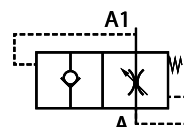


Referencia Part n°	ROSCA THREAD	CAUDAL MÁX. (l/min) MAX. FLOW (l/min)	PRESIÓN MÁX. (bar) MAX. PRESSURE (bar)	\$
VT009004	1/4" BSP	12	350	41,26
VT009006	3/8" BSP	30	350	55,96
VT009008	1/2" BSP	50	350	48,94

Válvula para caídas macho-hembra



Hose break valve male-female
Valve parachute male-femelle
valvola paracadute Maschio-Femmina

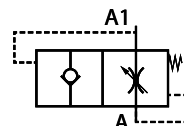


Referencia Part n°	ROSCA THREAD	CAUDAL MÁX. (l/min) MAX. FLOW (l/min)	PRESIÓN MÁX. (bar) MAX. PRESSURE (bar)	\$
VT007004	1/4" BSP	25	350	23,89
VT007006	3/8" BSP	50	350	30,74
VT007008	1/2" BSP	80	350	29,94

Válvula para caídas hembra-hembra



Hose break valve female-female
Valve parachute femelle-femelle
valvola paracadute Femmina-Femmina

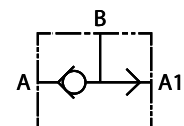


Referencia Part n°	ROSCA THREAD	CAUDAL MÁX. (l/min) MAX. FLOW (l/min)	PRESIÓN MÁX. (bar) MAX. PRESSURE (bar)	\$
VT006004	1/4" BSP	25	350	24,55
VT006006	3/8" BSP	50	350	24,99
VT006008	1/2" BSP	80	350	30,70

Conmutadora o selectora



Shuttle valve
Valve sélectrice à bille
Commutatrice o seletttrice



Referencia Part n°	ROSCA THREAD	CAUDAL MÁX. (l/min) MAX. FLOW (l/min)	PRESIÓN MÁX. (bar) MAX. PRESSURE (bar)	\$
VT005004	1/4" BSP	25	350	34,64
VT005006	3/8" BSP	50	350	45,07